

amani

BY RENSON

amani
BY RENSON



amani

Peace | piːs

noun [*mass noun*]

freedom from disturbance; tranquillity:
mental or emotional calm, not having to worry,
the peace of mind this product will give you



About Amani

Pure comfort, architectural design and innovative engineering: Amani is designed from the heart. Dare to think differently. After all, that's what your new outdoor space is designed for. A customised blend of luxury and serenity that offers you an immersive space to unwind and to enjoy outdoor living to the fullest. However and whenever you like.



1

Comfort

Amani is the very essence of comfort, where nature's embrace rejuvenates and inspires. Offering you a modern and luxurious outdoor space, where you'll find the peace of mind you've been looking for. All year round.



A perfect place to unwind.





2

Design

Where modern design meets timeless beauty, Amani arises. A vision of serenity and harmony, born from passion and precision.

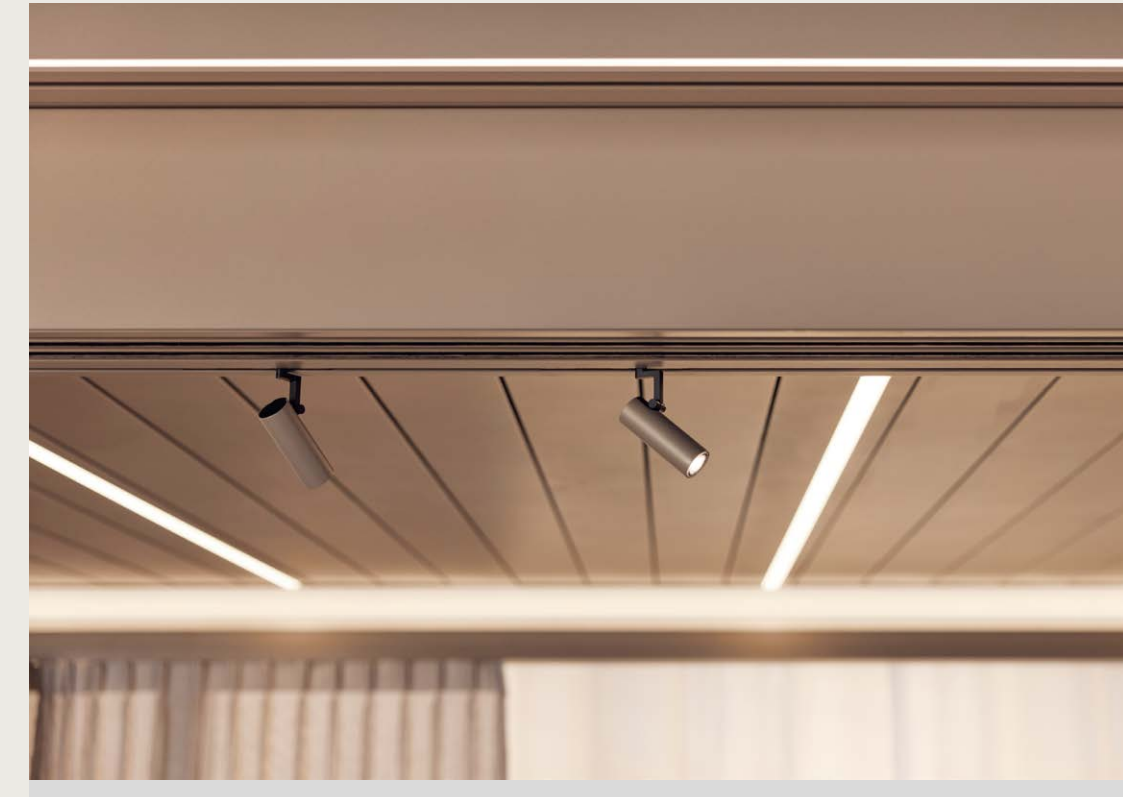


Pure comfort, visual harmony
and intelligent engineering ...
designed from the heart





Amani is your personalised architectural masterpiece. You choose the placement of the columns and add overhangs as stylish awnings. **Play around with shapes, lines, and structures.**



The right lighting transforms your outdoor space into something truly magical. **A mix of architectural, mood, and focus lighting,** creates a space that is both inviting and functional.



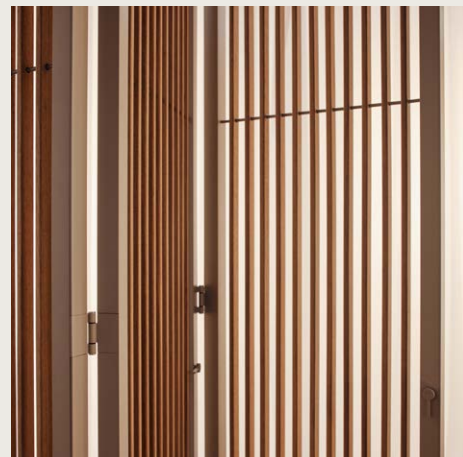
Elegance is what makes Amani different. **Wall coverings, folding and sliding panels that glide past the beam to the edge of the roof**, contribute to a harmonious space.



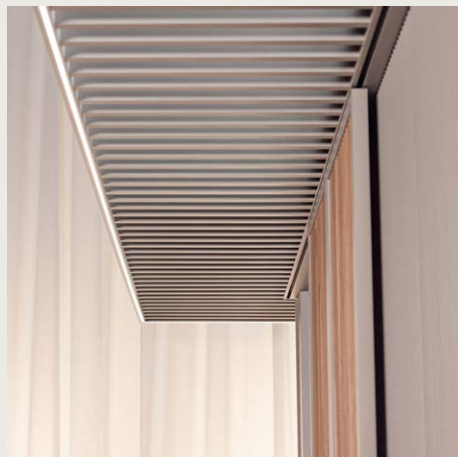
The Amani roof structure allows you to have up to **four options per side**. Screens, curtains, wall coverings, folding and sliding panels: choose and combine to create the perfect space.



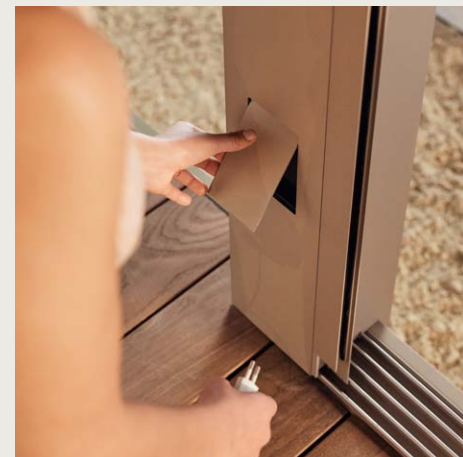
Screens



Folding panels



Awnings



Built-in socket



Fixed Linarte wall



Heating in fixed blade





Design styles

Everyone has their own style. Even when it comes to outdoor living, nature and architecture prefer to blend seamlessly, while still blurring the boundaries between indoors and outdoors. As an ideal source of inspiration, Renson developed 6 styles of outdoor living: colours, materials and textures perfectly matched, combining pure comfort with functional and aesthetic added value.



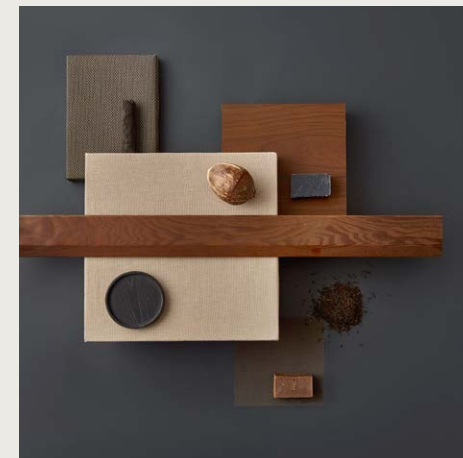
Limestone, sand and natural white tones and textures for an airy atmosphere: **Pure Essence.**



A refreshing and timeless look with Italian touches for maximum enjoyment: **Idyllic Garden.**



Sleek minimalism that completely blurs the boundaries between inside and outside: **Crystal Lounge.**



A minimalist style in a dark colour palette, inspired by traditional Japanese architecture: **Spiritual Harmony.**



Warm, southern colours, textures and materials for an instant summer feeling: **Earth Oasis.**

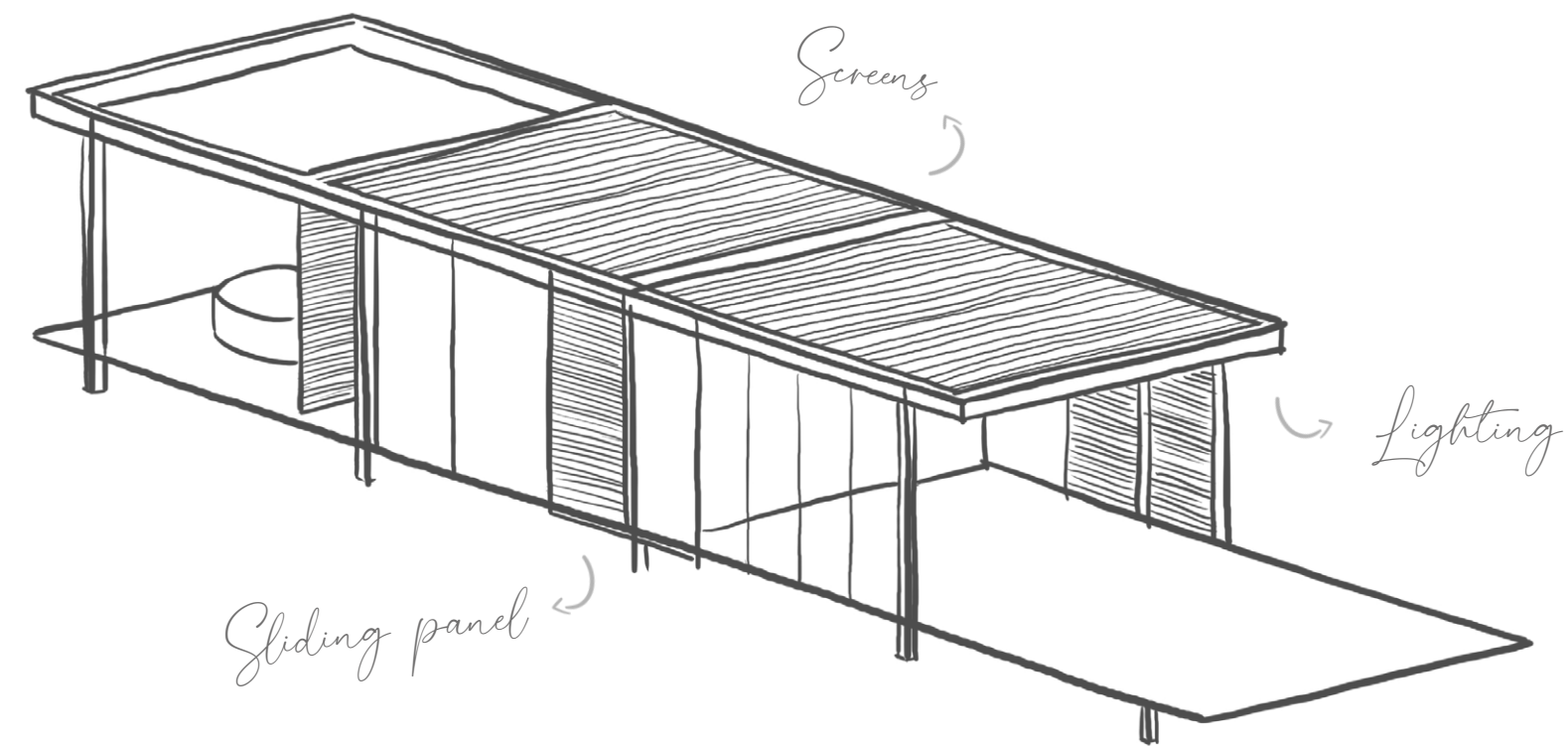


Radically contemporary and young, with a warm undertone of dynamic playful colours: **Tech Cocoon.**

3

Engineering

Amani is born at the intersection of passion and creativity. Through continuous development it pushes the boundaries of individual design for outdoor spaces, adding endless possibilities for configuring your personal space.

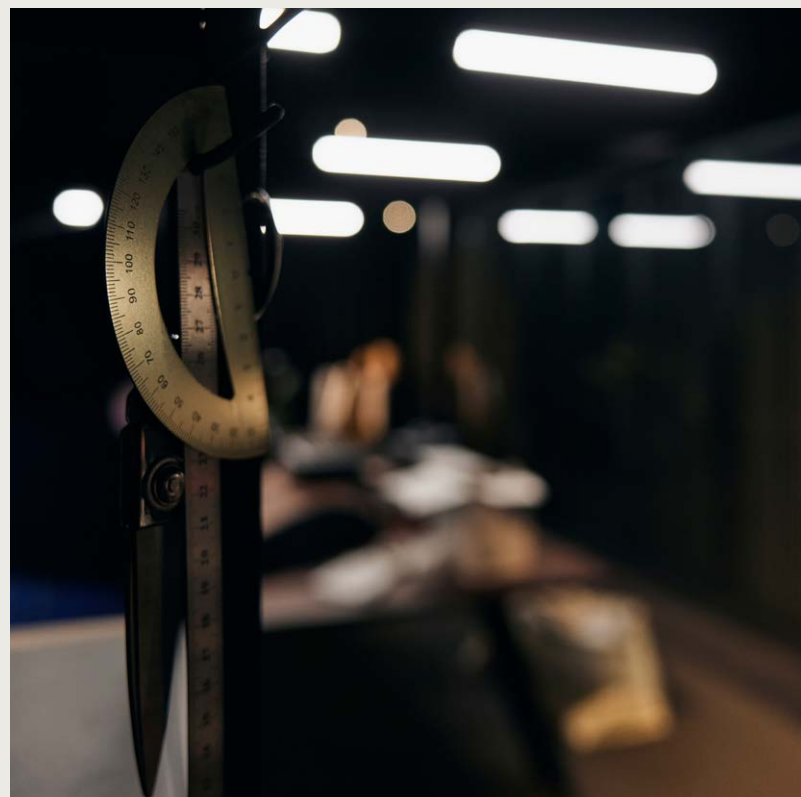






Crafted with passion, refined with precision.





Intelligent engineering since 1909

Reinforced columns allow endless personalisation.

The Amani **3D configurator** brings every idea to life.

Automated customisation thanks to sophisticated ordering and production.

Amani withstands the **power of nature** with ease.

Subject to the strictest quality requirements and **wind tests**.

100% weather resistant roof blades.

Sustainability first: fully recyclable.



Let Amani nurture your soul, be yourself, relax,
find inner peace in pure comfort and serenity.







At **Renson** we believe that high quality products and innovative solutions can add to an energy-efficient, comfortable and healthy life, indoors as well as outdoors. As a Belgian family business we team up with an extensive network of professional specialists to realize that ambition. With intelligent engineering, high end design and ease of use as our core principles.

An extended network of well-trained Ambassadors worldwide guarantee that our high quality products are installed in a professional way. **Renson Premium Ambassadors** can rely on years of experience in selling and installing Renson products. They always offer the full range and guarantee the best possible professional service. **Renson Ambassadors** are happy to welcome you to their showroom and guarantee a professional installation and after-sales service of your outdoor living space.

Find your Renson Amani distributor:



www.renson.net/amani

All photos shown are solely for illustration purposes and are a snapshot of the usage situation. The actual product may vary due to product modifications. Renson reserves the right to make technical changes to the products shown. You can download the most recent brochures at www.renson.net

